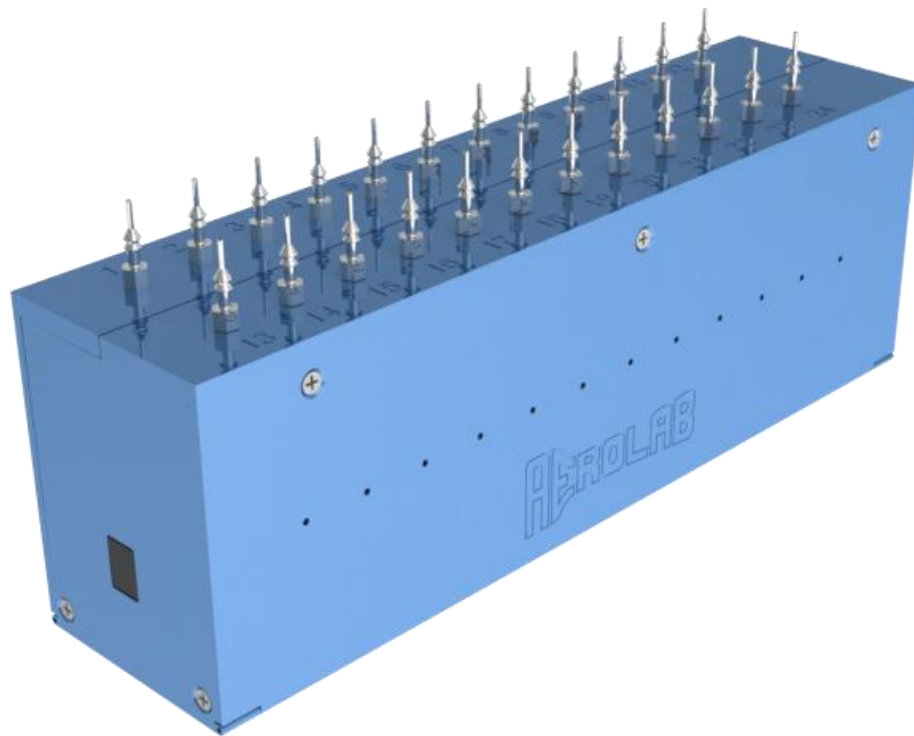


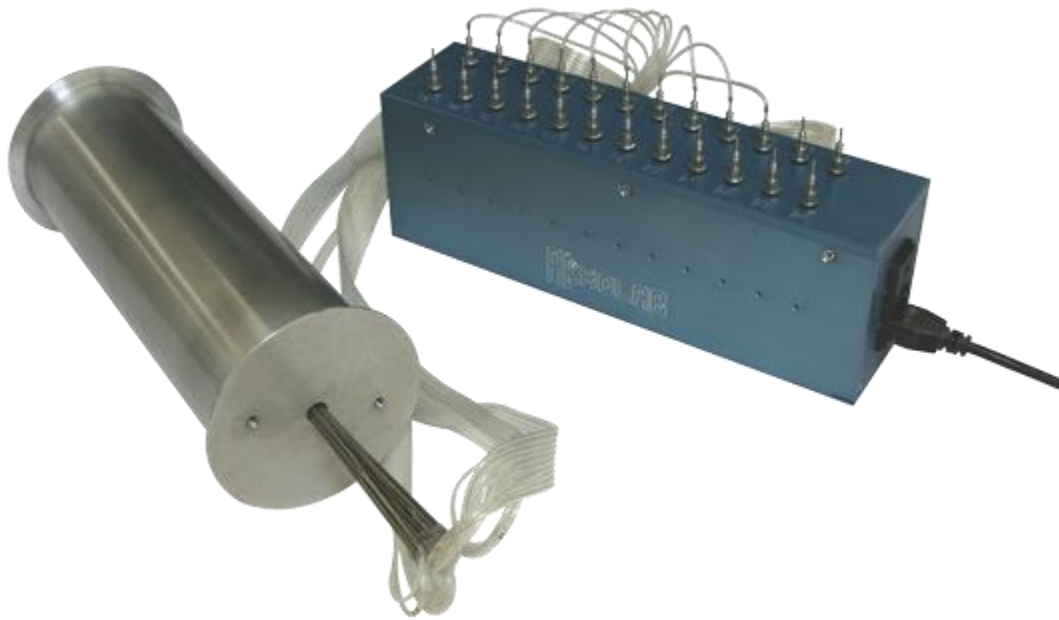
AEROLAB

EDUCATION & RESEARCH



Pressure Transducer Array System





Pressure Transducer Array (PTA) System

Often, wind tunnel testing requires the simultaneous measurement of several pressures. The AEROLAB PTA meets that requirement.

Traditional fluid-filled multi-tube manometers require measurement interpretation and manual recording. The AEROLAB PTA records data without the inaccuracies of interpretation.

Basic Specifications:

- Electrical Power: 104-115, 208-230VAC 50 or 60 Hz
- Enclosure Dimensions: 12 x 3 x 4.04 inches (30.5 x 7.6 x 10.3 cm)
- Output Signal: RS485
- Transducer Sampling Rate: 1KHz
- Output Signal Rate: approx. 8 ms per activated channel
- Accuracy: 0.002% of basic range
- Temperature Compensated, Solid State
- Channel Count: 12, 18 and 24

Adaptable:

- Multiple pressure ranges can be installed to meet your testing needs.
- AEROLAB's original dual-size pressure tube fittings - 1/16 and 1/8-inch (1.6 and 3.2mm) - simplify setup!



Close-up of Dual-size
Pressure Fitting



System Hardware

Simple:

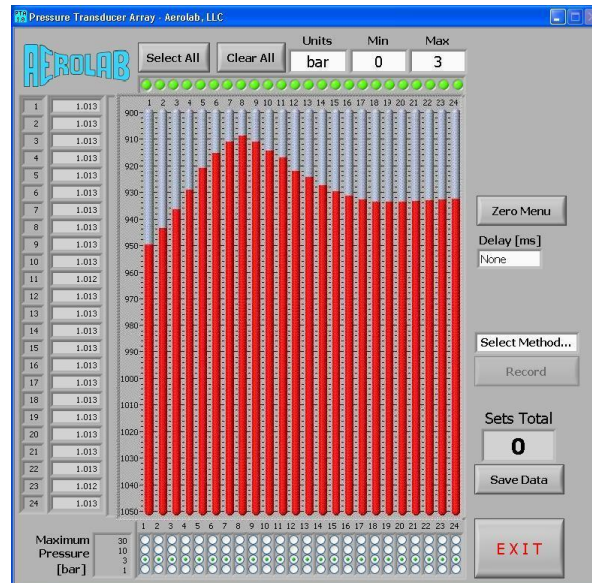
- The AEROLAB PTA requires only two (supplied) cables – a power cord and a 4-conductor telecommunications cable (RJ type plugs).
- The supplied LabVIEW executable program is easy to use and intuitive.

Configurable:

- Channels can be activated or deactivated as needed. The ability to deactivate channels decreases cycling time (2.5 ms per activated channel).
- The CNC machined case makes transducer replacement easy!
- The PTA can be integrated into existing AEROLAB data acquisition systems.

Transducer Channel Count:

- Systems are available with 12, 18 or 24 pressure transducer channels.
- If more channels are needed, systems can be daisy-chained together.



LabVIEW Display / Interface

Pressure Ranges:

- 800 - 1200 mBar (absolute - intended for atmospheric pressure measurements)
- 0 - 3 Bar (absolute)
- 0 - 10 Bar (absolute)
- 0 - 30 Bar (absolute)

Lasting Quality

Since 1947, AEROLAB products have been shipped to over thirty countries on six continents. AEROLAB products last for generations!



End Views

Shipping Details:

- Shipping box: 15 x 15 x 15 inches (28 x 38 x 38 cm), 21 pounds (9.5kg)

Contact AEROLAB:

AEROLAB LLC
9580 Washington Boulevard
Laurel, Maryland 20723
U.S.A.
(P) 301-776-6585
(F) 301-776-2892



Top View

<http://www.aerolab.com>

aerolab@aerolab.com

